

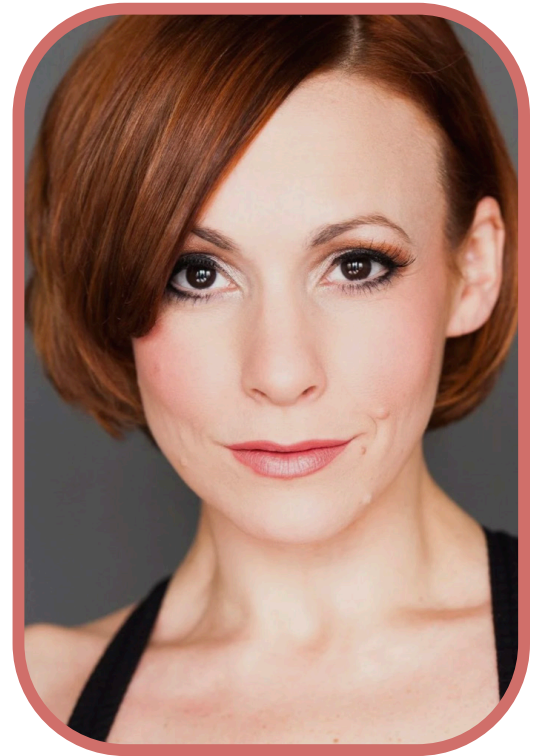


# One Mother of a Show!

Just in time for Mother's Day, **JENNY LEE STERN** brings a lively theatrical piece that blends humor, storytelling, and songs to celebrate moms (and dads) everywhere.

With a mix of anecdotes and candid reflections, the show captures some of the everyday trials and joys that define parenting, bringing laughter and tears set to a showtune backdrop. At the same time, it celebrates the messy and unpredictable side of raising children — and the joy found in small victories. It appeals not only to parents, but also to anyone familiar with ever-changing family dynamics.

Jenny is a Bucks County native and a Broadway veteran. She also performs frequently on the cabaret circuit in New York City. Regionally, she has appeared at the Media Theatre and Walnut Street Theatre in Philadelphia, and at Bucks County Playhouse in New Hope. She lives in Doylestown with her three daughters.



Join us to show appreciation for the mothers in your lives!

Seating is limited so please arrive early.



Sponsored by the  
Friends of Yardley-Makefield Library  
1080 Edgewood Road, Yardley, PA 19067  
Tel: 215-493-9020  
[www.YMFriends.org](http://www.YMFriends.org)

**Yardley-Makefield Library**  
**Saturday, May 2, 2 to 3 p.m.**